

2020 - 2021 Practical Chinese Programs (C/D/E/F)



- We are the accredited member of European Association for Quality Languages Services (EAQUALS) .
- Our campus locates in the heart of the city of Shanghai, one of the most attractive cities in China.
- Each semester, more than 1000 international students from nearly 100 countries choose to enhance their Chinese proficiencies with us.



Donghua University (DHU) is located in Shanghai. It was founded in 1951 and approved as the state-key university in 1960. DHU is one of the 75 universities that are under the direct management of the Ministry of Education of China. As early as 1954, Donghua University commenced to accept the international students who were among the first group of overseas students enrolled by Chinese universities. Nearly 5000 international students study at Donghua University each year. International Cultural Exchange School (ICES) offers diverse non-degree Chinese programs to meet various time schedules and learning demands.

- General Chinese Programs:
 - A (18 weeks, on the mornings, from Mon. to Fri.)
 - B (one month after A, 14 weeks, on the mornings, from Mon. to Fri.)
- Practical Chinese Programs:
 - C (15 weeks, on the mornings of Mon. Wed. & Fri.)
 - D (15 weeks, Tues. & Thurs., only for exchange students)
 - E (15 weeks, on the evenings of Mon. Wed. & Thurs.)
 - F (15 weeks, on the mornings and afternoons of Sat.)
- Vacation Chinese Programs: Summer (Jul. & Aug.), Winter (Jan.)



High-standard teaching group, diversified teaching modes and modern teaching facilities

All the teachers in the teaching group are equipped with professional background in "Teaching Chinese as a Second Language" and with rich teaching experience. Traditional classroom teaching and colorful activities are combined in order to integrate amusement in teaching. ICES also have plenty modern multimedia classrooms, language labs, reading rooms and self-study rooms to assist language education.

Comfortable and convenient surroundings, high-quality and efficient service

Yan'an road campus is located in the downtown area of Shanghai and is surrounded by several business circles with many banks, supermarkets, dozens of subways and bus lines, which greatly contributes to the convenient transportations. ICES can offer multilingual services in English, Korean and Japanese. Online application system also make it easier for students to apply.

Scholarships and multiple bonuses for currently enrolled students

ICES provides Excellent Student Award, Progress Award and Excellent Class Award, etc. to excellent students or classes, it covers 16% of the total language students. Currently enrolled students can enjoy the tuition waiver, join cultural workshops and international student activities for free or enjoy a discount.

Colorful extra-curricular activities and experience Chinese culture

To help students understand Chinese culture and be immersed into Chinese society, ICES arranges various cultural lectures, cultural workshops, city tour and language excursions. Students can also communicate with Chinese students and students from all over the world by taking part into different student clubs or events.



Program Information

2020 Autumn Semester

Program	Duration (weeks)	Time (class hours)
C	Sep.7 - Dec.18 (15 weeks)	Mon. Wed. Fri. 9:25-12:10, 3 class hours (totally 117 class hours)
D (Only for exchange students)	Sep.8 - Dec.17 (15 weeks)	Tues. Thur. 9:25-12:10, 3 class hours 13:30-15:10, 2 class hours (totally 130 class hours)
E	Sep.7 - Dec.17 (15 weeks)	Mon. Wed. Thur. 18:50-21:10, 3 class hours (totally 117 class hours)
F	Sep.12 - Dec.19 (15 weeks)	Sat. 9:30-12:05, 3 class hours 13:00-15:35, 3 class hours (totally 78 class hours)

Levels: beginner, elementary, intermediate

Application Deadline: Aug. 26

Enrollment Day: Sep. 2 or Sep.3 (assigned on the Admission Notice)

2021 Spring Semester

Program	Duration (weeks)	Time (class hours)
C	Mar.8 - Jun.18 (15 weeks)	Mon. Wed. Fri. 9:25-12:10, 3 class hours (totally 117 class hours)
D (Only for exchange students)	Mar.9 - Jun.17 (15 weeks)	Tues. Thur. 9:25-12:10, 3 class hours 13:30-15:10, 2 class hours (totally 130 class hours)
E	Mar.8 - Jun.17 (15 weeks)	Mon. Wed. Thur. 18:50-21:10, 3 class hours (totally 117 class hours)
F	Mar.13 - Jun.19 (15 weeks)	Sat. 9:30-12:05, 3 class hours 13:00-15:35, 3 class hours (totally 78 class hours)

Levels: beginner, elementary, intermediate

Application Deadline: Feb. 24

Enrollment Day: Mar. 3 or Mar.4 (assigned on the Admission Notice)

- 1 class hour = 45 minutes
- Class size: The minimum size of each class is 8 students and the average is about 20.
- Legal holidays will be followed by the ICES's notification.
- Sit in on a class is not permitted.

Eligibility

- Between 16 and 60 years' old, and have a valid ordinary foreign passport.
- Non-Chinese citizen in good health;
- Applicant in China should have a valid visa.

Fees (CNY) must be paid online or directly to ICES

Program	Application Fee (non-refundable)	Tuition Fee	
		One Semester	One Year
C	400	5500	10700
E	400	6200	12100
F	400	5000	9700

* Designated textbooks are for free.

- Tuition of one semester must be paid in one lump sum.
- No matter one attends the class or not, tuition will be refunded only 50% if one quits school within the first week; no tuition will be refunded from the second week on.



Curriculum

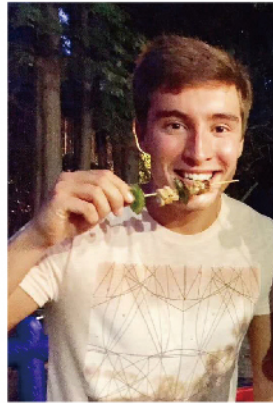


Program	Level	Teaching Objectives	Textbooks
C	Elementary (including beginner) [C1、C1+ C2、C2+]	Master about 500 words and basic daily expressions. Anticipated HSK Level: New HSK 2-3	 <p><i>Chinese in Real Life</i> published by Jiaotong University Press, <i>New Practical Chinese Reader</i> (book 3 to 5) and its <i>Workbooks</i> published by Beijing Language and Culture University Press</p>
	Intermediate [C3、C4、C5]	Master about 2000 words and be able to accurately express personal opinions on general social topics. Anticipated HSK Level: New HSK 4	
D (Only for exchange students)	Beginner [D1]	Master about 500 words and basic daily expressions. Anticipated HSK Level: New HSK 2-3	 <p><i>Chinese in Real Life</i> published by Jiaotong University Press</p>
E (Evening Business)	Elementary (including beginner) [E1、E2]	Master about 500 words and basic daily and business expressions. Anticipated BCT Level: BCT A	 <p><i>Winning in China-Business Chinese</i> series published by Beijing Language and Culture University Press</p>
	Intermediate [E3]	Master about 1500 business words and be able to communicate on general business topics. Anticipated BCT Level: BCT A-B	
F (Weekend)	Elementary (including beginner) [F1、F2]	Master about 500 oral vocabularies and be able to talk about weather, location, hobby, profession, shopping, transportation, trip, health, etc.	 <p><i>Experiencing Chinese</i> series published by Higher Education Press</p>
	Intermediate [F3、F4、F5]	Master about 1200 oral vocabularies and be able to discuss and express personal opinions on social phenomena, Chinese culture and traditions, etc.	

저는 C2부터 시작해서 현재 C5반에서 공부중인 학생입니다. 좋은 선생님, 그리고 열정적인 친구들과 함께 서로 지지하며 공부하는 것은 정말 멋진 일이었습니다. 간략히 C과정의 좋았던 점을 소개하자면, 우선 선생님들이 모두 친절하고 좋습니다. 체계적인 수업준비로 수업에 몰입이 쉬웠고, 한 시간도 빼먹기 아까울 정도로 수업 내용이 알차습니다. 또한 수업내용과 연계되어 진행되는 활동들은 중국문화를 이해하는데 큰 도움이 되었습니다. 특히 학우들과 함께 중국어를 사용하면서 상하이의 명소를 돌아보는 기회는 보통 여행과는 다른 멋진 경험이었습니다. 동화대 여학연수 과정을 통해 만난 사람들, 그리고 그 시간은 제 인생에 값진 추억이 될 것입니다.

Program C

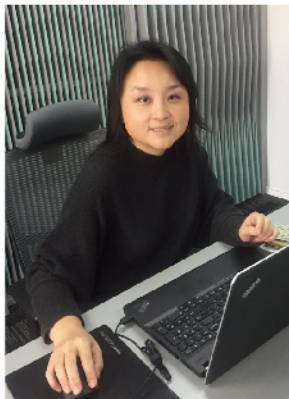
闵恩映
Korean



Program D

Moritz
German

The Chinese course turned out to be one of the most interesting and exciting courses I had during my semester at Donghua. Thanks to our two great Chinese teachers, I could make significant progress in reading, writing, listening and even speaking already after a few classes. They were always sensitive to our needs and knew very well how to teach the sometimes very difficult content. It was great to learn how to type Chinese characters on the phone, and a unique experience to sing birthday songs in Chinese. The highlight of the course was going to a fruit shop and buying fruits in Chinese. It was amazing that we could directly apply in daily life what we learned in class, and we realized that learning Chinese is not so hard anymore when you have the right teachers. Thanks to the Chinese course, I could dive much deeper into Chinese life and culture and make many unforgettable experiences with local people!



It's my second course I attend at Donghua University and both times I'm very satisfied with everything: how the course is structured, how groups are correctly assembled by level, how the learning material is prepared. Special note on teachers, who are always very professional, open and lively, they teach with passion and involvement making the learning process more interesting and simple to comprehend. The course helped me to expand my vocabulary, to learn and use grammar, to be more confident in speaking.

Program E

VICTORIA IM
Russian

私は2009年から上海に赴任していますが、仕事上特に必要に迫られることなく、当初より中国語を勉強せずに来ました。2016年から仕事上中国語の必要性を感じ2017年から东华大学にて中国語を勉強し始めています。英語に次いで世界で2番目に多く使われている中国語を使えば今後の生活にきっと役立ちます。授業も個人レベルによってクラス分けがあり、初心者でも安心して学習できます。先生も優しく丁寧に理解するまで教えてくれるので必ず身につきます。中国で働く皆さんも今後は必須ですので、是非一度見学に来て下さい。



Program F

赤羽健吾
Japanese

Timetable Sample

Time	Day	Monday	Tuesday	Wednesday	Thursday	Friday	Saturday
Class 1 (9:25~10:10)		C	D	C	D	C	F (9:30~10:15)
Class 2 (10:30~11:15)		C	D	C	D	C	F (10:25~11:10)
Class 3 (11:25~12:10)		C	D	C	D	C	F (11:20~12:05)
Class 4 (13:30~14:15)			D		D		F (13:00~13:45)
Class 5 (14:25~15:10)			D		D		F (13:55~14:40)
Class 6							F (14:50~15:35)
Class 7 (18:50~20:00)		E		E	E		
Class 8 (20:10~21:10)		E		E	E		

■ Scholarships

Excellent Student Award: certificate, gift, prize

Progress Award: certificate, gift, prize

Excellent Class: certificate and gift

Scholarships shall not be delivered to students by cash and can only be used for tuition waiver of the next semester.

- Each student's attendance will be strictly recorded;
- Completion Certificate will be issued based on one's attendance rate, monthly tests and final examination.



Immerse yourself in Chinese and the culture

- **Cultural workshops:** Chinese calligraphy, Chinese painting, Paper-cut of China, Moon-cake making, Drawing fan of China, Beijing Opera Mask painting and etc.
- **City tour:** Visit historic and cultural scenic spots under the guidance of teachers.
- **Language excursions:** Each semester there are several language excursions that offer experience of distinctive natural and cultural environments out of Shanghai.



We bring you closer to China



Make friends from all over the world

- **Student clubs:** The International Students Association (ISA) of DHU includes more than ten recreational and sports clubs, such as soccer club, table tennis club, street dance club, afrobeat, photography club, volunteer outreach program and ect. Students with artistic talents are welcomed to join the International Students Performing Art Troup.
- **Chinese and foreign students exchange:** The iTALK of DHU provides Chinese and foreign students a platform for extensive and in-depth cross-cultural communication through recreational and sports activities and mutual learning.
- **Large-scale activities:** "China Hand" Contest, "Tenglong Cup" Sports Day, "Phoenix Cup" Talents Competition, Orienteering Challenge Competition, Chinese Culture Festival, International Culture Festival, etc.



Freshmen Guide

★ Visa

- ICES does not issue documents for students of Program C/E/F to apply for a student visa or Residence Permit (study). However, one will be rejected to enroll or study at Donghua University if on his/her passport there is no Residence Permit with its validity covering the study duration.

★ Off-campus residence

- On-campus dormitories are not open to students of Program C/E/F.
- Each foreigner should go to the local police station to draw Registration Form of Temporary Residence (RFTR) within 24 hours since moving in the apartment, with the original passport and rental contract. The form must be renewed upon change of residential address or change of visa.
- While living outside the campus, please be aware of your security and be careful of using water, gas and electricity.

★ Shuttle bus service

ICES offers shuttle bus service to Program C students who live in the foreigner gathering areas such as Shanghai International Garden, Jinxiu Jiangnan, Huaguang Garden, Mingdu City, Gubei Area. Fee of shuttle bus service is CNY 300-500/semester.



★ Tuition payment

You are suggested to pay the tuition by the following ways in advance to avoid the long queue on the enrollment day:

- **Pay online (recommended):** Use your Visa card, MasterCard, UnionPay card, Wechat Pay or Alipay which has been enabled online payment service. Log in your personal account at admissions.dhu.edu.cn, click "academic information - application progress - payment information - online payment" and pay.
- **Pay at ICES office:** with RMB cash or UnionPay card.

★ Enrollment

- In order to avoid the long queue on the enrollment day, the admitted students are encouraged to finish tuition payment and online Chinese placement test within designated period before the new semester starts. To complete this, one should log in their personal account at admissions.dhu.edu.cn.
- **Enrollment:** Each admitted student, including those who have completed the tuition payment and online Chinese placement test, is required come to the university on the day designated on the Admission Notice for the enrollment & orientation. Collection of one's student ID card & textbooks, payment of tuition, and/or Chinese placement test must be processed on this day. Meanwhile, one can purchase the shuttle bus card or food card (used at the university canteens).
- **Late enrollment:** late enrollment will not be accepted.

How to apply

1 Online Application

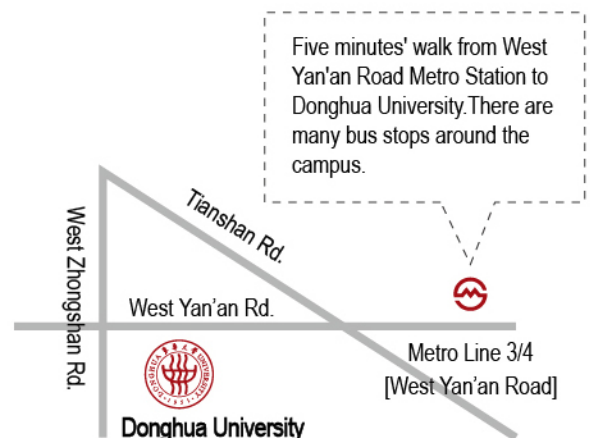
Prepare in advance the JPG format of the electronic ID photo (similar size as the photo on the passport) and the scanned passport information page, then register a personal account at admissions.dhu.edu.cn. Complete the "Personal Information" and the upload of photo & passport page, as well as the "Academic Information" by choosing the program you plan to learn. After an initial review by the university, applicants will receive a confirming email with the relevant guides.

2 Application Fee Payment

- Pay online (recommended): log in your personal account at admissions.dhu.edu.cn, click "academic info → application progress → payment information → online payment". Visa card, MasterCard, Union Pay card or Wechat Pay, Alipay with online payment service are applicable.
- Pay at ICES office: with RMB cash or UnionPay card.

3 Admission

Your application will be officially reviewed then. If you are admitted, you can find your own Admission Notice by logging back in your personal account at admissions.dhu.edu.cn.



Welcome to

Shanghai



International Student Admissions Dept. (Office 121)
International Cultural Exchange School, Donghua University

Add: 1882 Yan'an Road West, Shanghai, China

Tel: +86-21-62378595/62379336/62373452

Fax: +86-21-62708702

Email: ices@dhu.edu.cn

Website: <http://english.dhu.edu.cn>

<https://mandarin.dhuices.com>



dhu-ices



Donghua university



ices_dhu



donghua university