

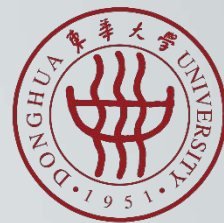
FIND YOUR STUDY ABROAD

DESTINATION IN CHINA

PROGRAMS & SCHOLARSHIPS

Information for Incoming Students from
DHU's overseas Partner Universities

DONGHUA
UNIVERSITY
SHANGHAI



A nighttime aerial view of the Shanghai skyline, featuring several prominent skyscrapers illuminated with lights. The sky is a deep blue with some clouds. A semi-transparent white text box is overlaid on the right side of the image.

SHANGHAI

City of the Future

OPENNESS
INNOVATION
INCLUSIVENESS

CONTENTS

As a partner university of more than 150 universities and institutes around the world, Donghua University (DHU) offers a bunch of programs with scholarship opportunities to its partners' enrolled students pursuing short-term experience, semester immersion, or pursue a higher degree.



Exchange Study @ DHU

3

Incoming exchange study under the signed university level's *Student Exchange Agreement*.



Summer Fun

7

3~ 6 weeks' short-term experience in July or August, with rich scholarships offered.



Visiting Study

15

Half or one year's Chinese language enhancement and cultural experience, credit study or doing research.



Customized Programs

21

Co-design the program with DHU to meet the different needs of each partner.



Pursue a Postgraduate Degree

27

Pursue a master's or doctoral degree at DHU with the entrance scholarships sponsored by Chinese government.

This is DONGHUA

- A double first-class construction university founded in 1951 and directly under the Ministry of Education of China. Recruit international students from 1954.
- Academic research excellence in Textile Engineering, Material Science, Environmental Engineering, Fashion & Design, etc.
- Rich and colorful activities and events makes DHU a dynamic international students community.



1

Exchange Study @ DHU

Spring semester: March ~ July

Fall semester: September ~ next January

<https://english.dhu.edu.cn/incoming>

Study Information

Courses:

- 20~30 English-taught courses with DHU credits offered per semester
- 4 categories: Chinese language, culture, business, engineering
- Unique and immersive industry practice combined with theory learning
- Young, yet experienced faculties with a broad industry outlook and collaborative teaching approach

Duration:

1 or 2 semesters

Semester:

- Spring: March~July
- Fall: September ~ Next January

Benefits:

- Application fee waiver
- DHU tuition fee waiver





WHO can join:

Currently enrolled non-Chinese students from the partner universities that have signed the university level's *Student Exchange Agreement* with DHU.

HOW to join:

Check with the home university for exchange information first. Based on the assigned number of student exchange, the home university will select & nominate the candidates to DHU.

SUBMIT application:

After DHU's approval on the nomination, the candidates make the online application to DHU at <https://admissions.dhu.edu.cn> before the following deadline.
Spring intake. November 30
Fall intake. May 31



HAPPY exchange @ DHU



2

Summer Fun

Summer Chinese Program (SCP)

Summer Fashion Program (3S-CTCP)

Summer Textile Program (BR-TIIC)

<https://english.dhu.edu.cn/group>

SUMMER CHINESE PROGRAM (SCP)



Chinese Classes

Multiple levels available; classes with credits arranged in the mornings focusing mainly on enhancing one's oral expressive abilities, combined with grammar explanation and topic discussion.



Cultural Workshops

Various cultural lectures and workshops will be offered twice a week in the afternoons to help the students have a real-life experience on what they have learned from the textbooks.



Friendship

Meet with hundreds of young peers from various countries and universities to learn from each other and experience a fun and fulfilling time in the amazing city of Shanghai.

SCP	3 weeks (Partial Program)	5 weeks (Full Program)
Application Fee	CNY 200	
Tuition Fee	CNY 3,600	CNY 6,000
Remark	Proof of study will be issued	Certificate will be issued

DHU International Exchange Scholarship:

Partner university can nominate TWO candidates to attend either 3 weeks (partial program) or 5 weeks (Full program) and receive the Scholarship.

Scholarship covers full waiver of application fee, tuition fee, and on-campus double room accommodation fee.

Nomination deadline: April 30

Benefits for Self-funding students:

Enrolled students from the partner universities will enjoy following benefits:

- √ Application fee waiver
- 10% tuition fee off
- √ Free double room accommodation

(An enrollment certificate from the home university/institute is required for application)

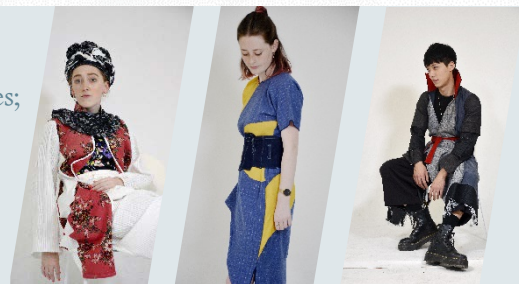
SUMMER FASHION PROGRAM

Shanghai Summer School -- Chinese Traditional Costume Program (3S-CTCP)

Duration: 4 weeks in July

Who can Join: Currently enrolled non-Chinese nationality's students from partner universities; Majored in fashion or textiles design with solid academic foundation and excellent daily performance; Excellent in English proficiency.

Application Deadline: Middle of May



In-class Lectures related to the annual theme on Chinese traditional costume art and history, Shanghai style fashion trend and innovation, Chinese language and colorful Chinese culture, etc.

Field trips & Visits consist of in-class contacts and field trips guided with professional introduction to the museums, fashion studio, fashion enterprises, cultural spots, etc.

Workshop on the annual theme makes the students from different countries team up to transform the concept to a series of fashion creation portfolio.



Nomination & Application

- Before middle of April: partner universities nominate their students according to different funding types;
- Before middle of May: nominated students complete their online application at <https://admissions.dhu.edu.cn>

This program is also open to non-students with a background in fashion or textile design to apply for self-funded study.

Funding:

- **Full grant:** full waiver of application fee, tuition fee, and on-campus dorm fee.
- **Partial grant:** full waiver of application fee and tuition fee.
- **Discounts on self-funding nominees:** full waiver of application fee and 10% tuition fee off

SUMMER TEXTILE PROGRAM

Advanced Seminar for Textile Industry International Cooperation Program (BR-TIIC)

Duration: 4 weeks in July

Who can Join: Non-Chinese citizens from the Belt & Road countries who are doctoral candidates, master's students, senior undergraduates, young lecturers and researchers, or those who work in the textile industry.

Application Deadline: Middle of May



In-class Lectures on textile academic frontier knowledge, sustainable development of China's textile industry, textile trade and management, Chinese language and Chinese culture, etc.

Field trips & Visits to the textile and apparel enterprises in Yangtze River Delta area, understanding the innovation and capacity upgrade as well as the international cooperation progress via on-site investigation.

Seminar will be held according to different topics and tasks, participants will make the summary report.



Nomination & Application

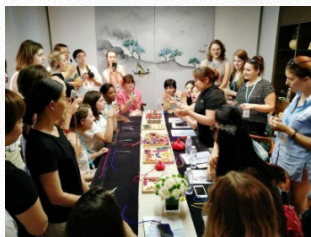
- Before middle of April, partner universities nominate their students according to different funding types;
- Before middle of May: nominated students or complete their online application at <https://admissions.dhu.edu.cn>

Funding:

- **Full grant**: full waiver of application fee, tuition fee, and on-campus dorm fee.
- **Partial grant**: full waiver of application fee and tuition fee.
- **Discounts on self-funding nominees**: full waiver of application fee and 10% tuition fee off



AMAZING experience IN SHANGHAI



3

Visiting Study

General Chinese Language Program

Credit Study

Research Activities

<https://english.dhu.edu.cn/admissions>

General Chinese Language Program



  东华大学国际文化交流学院
International Cultural Exchange College, Donghua University

STUDY CHINESE at DONGHUA

*We bring you
closer to
China*



- The accredited member of the Evaluation and Accreditation of Quality Language Services (EAQUALS).
- Located in the heart of Shanghai, one of the most attractive cities in China.
- Offers a variety of non-degree Chinese programs to meet different learning needs and schedules.

Who can join

Those plan to focus on strengthening the language learning and improving Chinese proficiency intensively, for job hunting, future career development, pursuing a degree in Chinese universities, or exploring an alien environment in the east.

Meanwhile, experience the study and campus life in the university locates in downtown Shanghai, make young friends from all over the world, and gain a real understanding of the city and life in China.

LEARNING CONTENTS: Level from beginner to advanced are offered. Classes are in the mornings from Monday to Friday, including Reading and Writing, Listening & Speaking. In-person teaching in classrooms combines with rich exclusive online learning materials for self-study.

Immerse yourself in Chinese and the Chinese culture

STUDY DURATION

1 or 2 semesters

FEES & BENEFITS

Application fee: RMB 400

Tuition fee: RMB 10800/semester

Benefits for enrolled students from the partner universities:

- √ Application fee waiver
- √ 10% tuition fee off



Scholarship Opportunities

A student can apply to study in General Chinese Program as a general scholar under the sponsorship of Chinese Government Scholarships (CGS) or International Chinese Language Teachers Scholarship (ICLTS).

CGS: <https://www.campuschina.org>

ICLTS: <http://cis.chinese.cn>

ONLINE APPLICATION DEADLINE:

Spring intake: December 31

Fall intake: June 30

<https://admissions.dhu.edu.cn>

Credit Study

Who can join

Enrolled non-Chinese students who are currently studying at the universities or institutes abroad. Learn as self-funded visiting students and select courses or do assignment offered by CIP (Center of International Programs). Complete the whole study load and earn the DHU credits (can be transfer to credits such as ECTS, etc.).



STUDY DURATION: 1 or 2 semesters

LEARNING CONTENTS: Chinese language, Culture, Economics, International Trade, Business Management, Marketing, Textile science & engineering, etc. Each course has 2 or more DHU credits.

ONLINE APPLICATION DEADLINE:

Spring intake: December 31 /// Fall intake: June 30

<https://admissions.dhu.edu.cn/>

Research Activities



Who can join

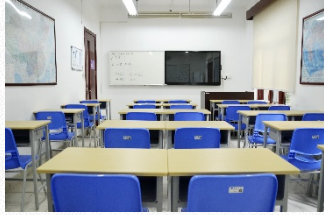
Overseas university students do research activities with DHU tutors or research groups, such as work in the lab, write thesis or dissertation, participate in projects or other research related activities.

STUDY DURATION: according to the length of the project, or a period of time decided by the tutors or research groups.

RESEARCH AREAS: Textile Science & Engineering, Material Science & Engineering, Environmental Science & Engineering, Control Science & Engineering, etc.

HOW TO APPLY: Contact the tutor or the research group first. If the acceptance is received, then make the online application at <https://admissions.dhu.edu.cn/>





4

Customized Programs

Semi-customized Programs

Fully Customized Programs

<https://english.dhu.edu.cn/group>

Customized Short-term Programs

Meet the different needs of each partner



In addition to the regular programs offered by DHU, a **semi-customized program** built on the DHU's two templates or a **fully customized program** can be designed to meet the unique needs of each partner university.

Semi-customized Programs

Theme 1: Mandarin + Shanghai-style Charm

Theme 2: Business Opportunities in China



Duration

At least 2 weeks better between each May and August



Contents

Choose the theme first, then choose the contents in each module to create a unique program



Accommodation

Minimum group size is 15 and on campus accommodation can be provided

Theme I: Mandarin + Shanghai-style Charm

Appreciate the beauty of Chinese language & charm of Shanghai-style fashion



Workshops on culture &

fashion let students learn about traditional and contemporary Chinese culture while appreciating the charm of Shanghai-style fashion.

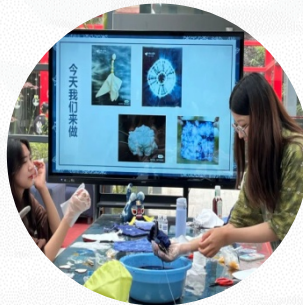


Communication across

cultures is one of the learning objectives of the program. Students will have many chances to interact with Chinese students and students from other universities.

Topic-based Mandarin

classes increase classroom interaction and students will learn the Chinese language and culture more efficiently and effectively.



City exploration Activities

allow students to experience the fusion of traditional and modern Shanghai style fashion in various ways.



Theme 2: Business Opportunities in China

Gain insights into the Chinese business & grasp the new opportunities

For bachelor to doctoral students

- ✓ Chinese economy & society
- ✓ Chinese business culture
- ✓ Logistics in China
- ✓ Entrepreneurship in China
- ✓ E-commerce or E-marketing in China
- and more



Lectures

Business
Visits



Complementary to lectures

- ✓ International or Chinese companies in different industry
- ✓ Industry park, creative park, or free trade zone,
- and more.....

Enrich the program design

- ✓ Survival Chinese
- ✓ Cultural workshops
- ✓ Sino-foreign students interaction
- ✓ Tours in Shanghai or surrounding cities
- and more.....



Communication

Fully Customized Program



A program fully designed according to the special needs of the partner university.

- **Different disciplines:** language, culture, fashion, business, or engineering
- **Different format:** in-person, online, or mixed
- **Special component:** project-based learning, internship, or Chinese buddy

5

Pursue a Postgraduate Degree

Programs & Scholarships

<https://english.dhu.edu.cn/admissions>

Postgraduate Programs



Duration

Master's Programs: 2.5 ~ 3 years

Doctoral Programs: 4 years



Intake & Application

Intake: each September

Application Deadline:

Scholarships application: February 28 / April 15

Self-funding application: June 15

Online Application: <https://admissions.dhu.edu.cn>



Scan the QR code to find the updated Master's & Doctoral degree programs & key application information.

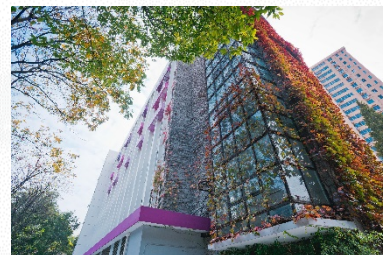


English-taught Master's Programs

- 1 Textile Engineering
- 2 Textile Materials & Textiles Design
- 3 Non-woven Materials & Engineering
- 4 Textile Chemistry & Dyeing & Finishing Engineering
- 5 Material Procession Engineering
- 6 Environmental Engineering
- 7 Civil Engineering (Heating, Ventilation and Air-Conditioning Engineering)
- 8 Biomedical Engineering
- 9 Chemical Engineering & Technology
- 10 Computer Science & Engineering
- 11 Electrical Engineering
- 12 Information & Communication Engineering
- 13 Optical Engineering
- 14 Journalism & Communication (MJC) - 2 years

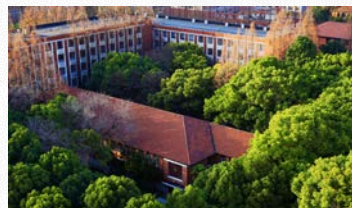
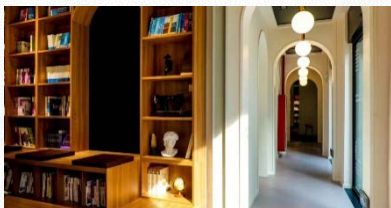
Entrance Scholarship Opportunities

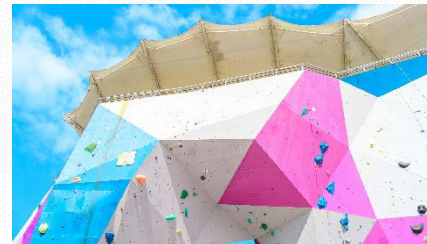
Scholarship Type	Consult & Apply Through	Scholarship Coverage
Chinese Government Scholarship (CGS - Category Type A) -- Bilateral Program	Local Chinese Embassy or Consulate	<p>Full Scholarship:</p> <ol style="list-style-type: none"> 1. Full waiver of tuition fee, on-campus dorm fee, and comprehensive Medical Insurance fee 2. Monthly stipend offered: <ul style="list-style-type: none"> -- Master students: CNY3000 -- Doctoral students: CNY3500 <p>Partial Scholarship: one or some items of the full scholarship</p>
Chinese Government Scholarship (CGS - Category Type B) -- High-level Postgraduate Program -- Silk Road Program	DHU	
Shanghai Government Scholarship (SGS)		



YAN'AN ROAD CAMPUS

in downtown Shanghai





SONGJIANG CAMPUS

with beautiful surroundings





Accommodation

International Student Apartment (ISAs) is located on Yan'an road campus and Songjiang campus. Admitted students can make reservation via online application account. Accommodation fees must be paid in one lump sum for a whole semester upon check-in.

Campus	Room Type	Room Fee (per night)	Room Fee / Semester (about 130 days)
Yan'an Road	Double Room	CNY 75 / person	CNY 9,750 / person
	Double Room	CNY 60 / person	CNY 7,800 / person
	Multiple-bed Room (shared by 3-4 persons)	CNY 45 / person	CNY 5,850 / person
Songjiang	Double Room	CNY 50 / person	CNY 6,500 / person
	Multiple-bed Room (shared by 3-4 persons)	CNY 35 / person	CNY 4,550 / person



Follow us on Social Media

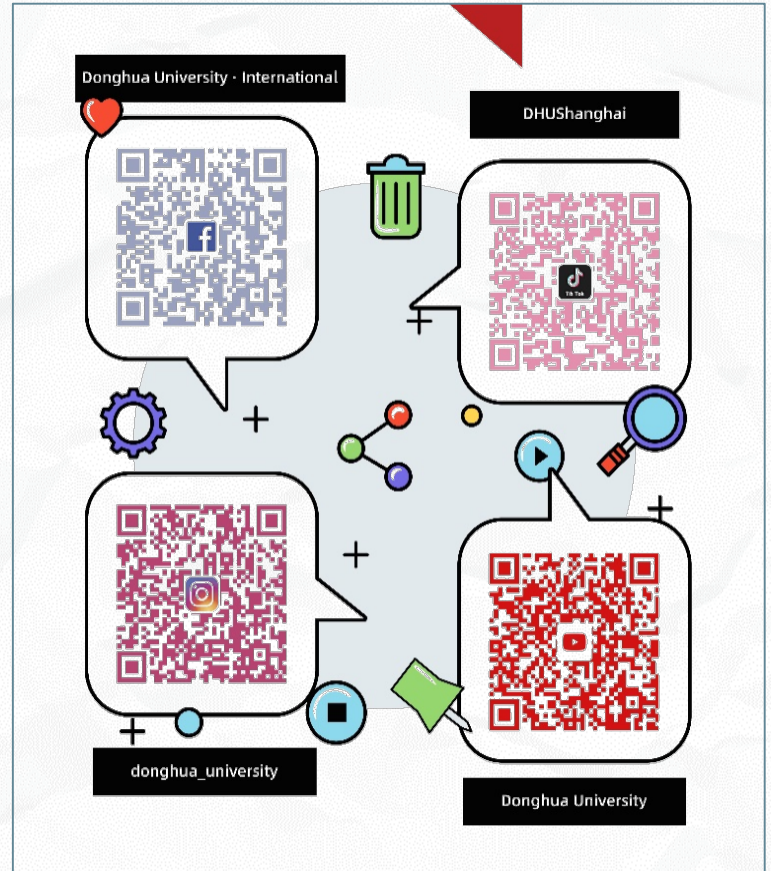
WeChat
public account



*ISO -
International
Students
Office*



*ICES -
International
Cultural Exchange
School*



A complex network of black dots connected by thin grey lines, forming a web-like structure that fills the background of the slide. The dots are of varying sizes and are distributed across the entire frame, with a higher density in the lower-left and lower-right areas.

Donghua University

<https://english.dhu.edu.cn/>

International Students Office

TEL : +86-21- 6237 9336

EMAIL : iso@dhu.edu.cn

ADD: 1882 Yan'an Road West, Shanghai,
200051 P.R.China